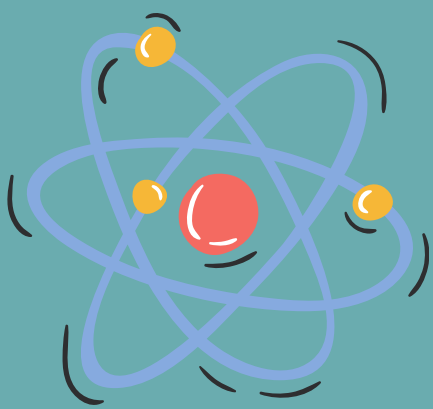


EUROPEAN SCHOOL BRUSSELS 1



SCHOOL DAY

A typical school day starts at 8:10 and finishes at 15:50. They have 2 longer breaks in between classes and many free periods. Their school complex consists of 4 different buildings so they are constantly moving in between them.



SUBJECTS

For the first 5 years of secondary school, you have to attend all of the courses. In the last 2 years, there are still some obligatory courses, such as Maths, Language 1, Philosophy, ..., however, everyone chooses a few specific courses, which they are going to take on the final exams.



GRADING

In the first 5 years of secondary school the grades are marked from A to F, but in the last 2 years grades are numbered from 1 to 10. They are graded by their A mark (participation, presentations, quizzes, quick tests, ...) and their B mark or B test, which they take at the end of every semester for every subject.



TRANSPORT TO SCHOOL

School transport is organized by buses, but it is paid privately. Still many go to school by bike or by foot. People usually have subscriptions for the city transport of Brussels, so some travel by train, metro or trams.



FOOD

There are many different options for lunch at school. They can eat at the cafeteria, at the school canteen, some go outside to eat, or they bring lunch from home. They usually eat between the two larger breaks.